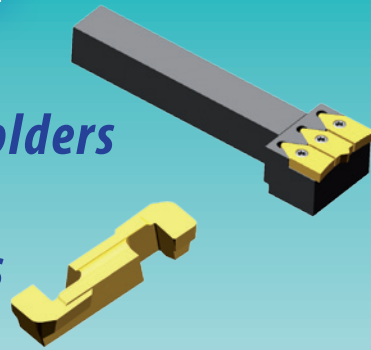


Tailor made solutions

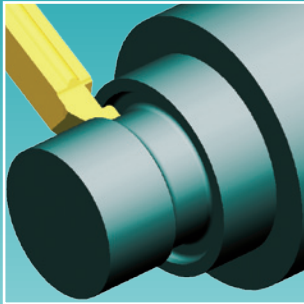
...a real challenge

▶ ***Special tool holders***

▶ ***Special inserts***

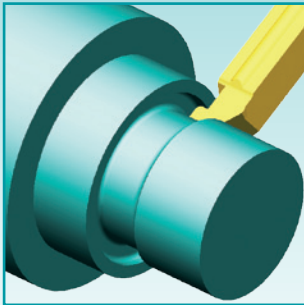


When and why should tailor made solutions be applied?



- ▶ when standard tools are not efficient,
- ▶ general cost saving measures,
- ▶ to reduce production time,
- ▶ to save on tool costs.

Our Strengths



- ▶ Qualified service
- ▶ Specified quotations
- ▶ Fair prices
- ▶ Production on most advanced machine tools
- ▶ Short delivery times

You need a tailor made solution?

Please contact us: infozm@kemmerhmw.de

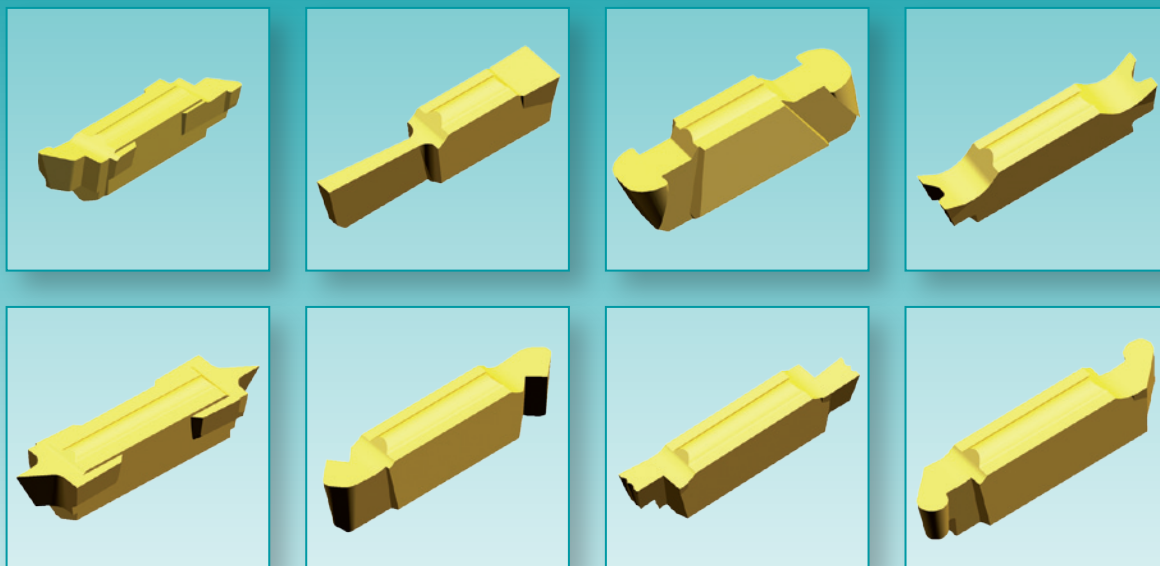


Tailor made inserts

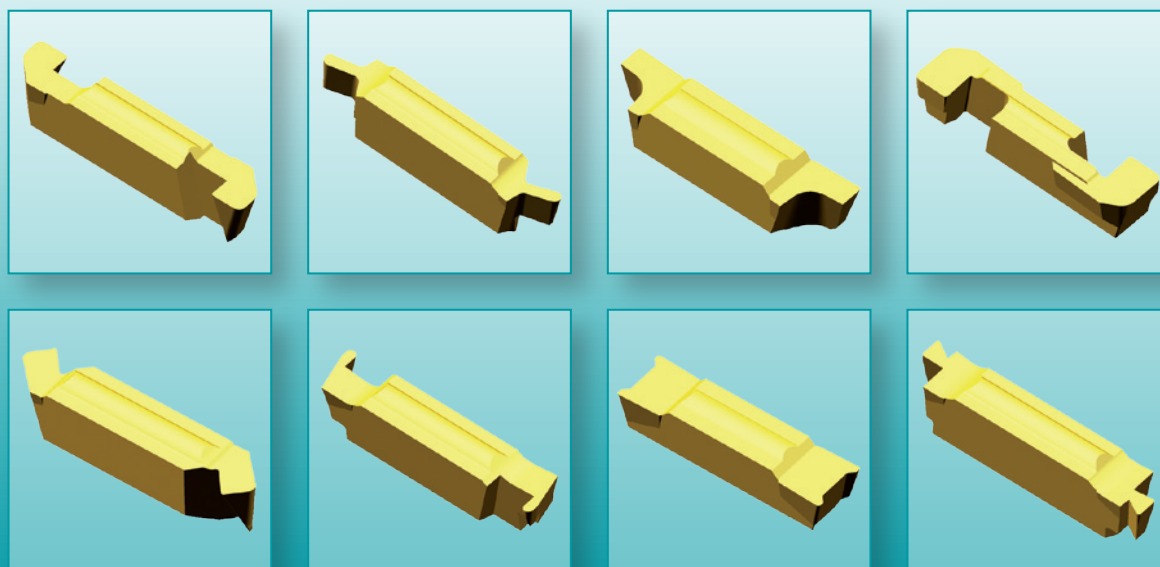
- ▶ So far more than 3300 different profiles have been ground
- ▶ Manufactured on most advanced machine tools
- ▶ Qualified employees
- ▶ Small quantities can also be made
- ▶ Precise cutting edges (Perfection on the edge)



Tailor made inserts with 2 edges based on P92 and P92-P System



*Special requirements?
We will fulfill them!*

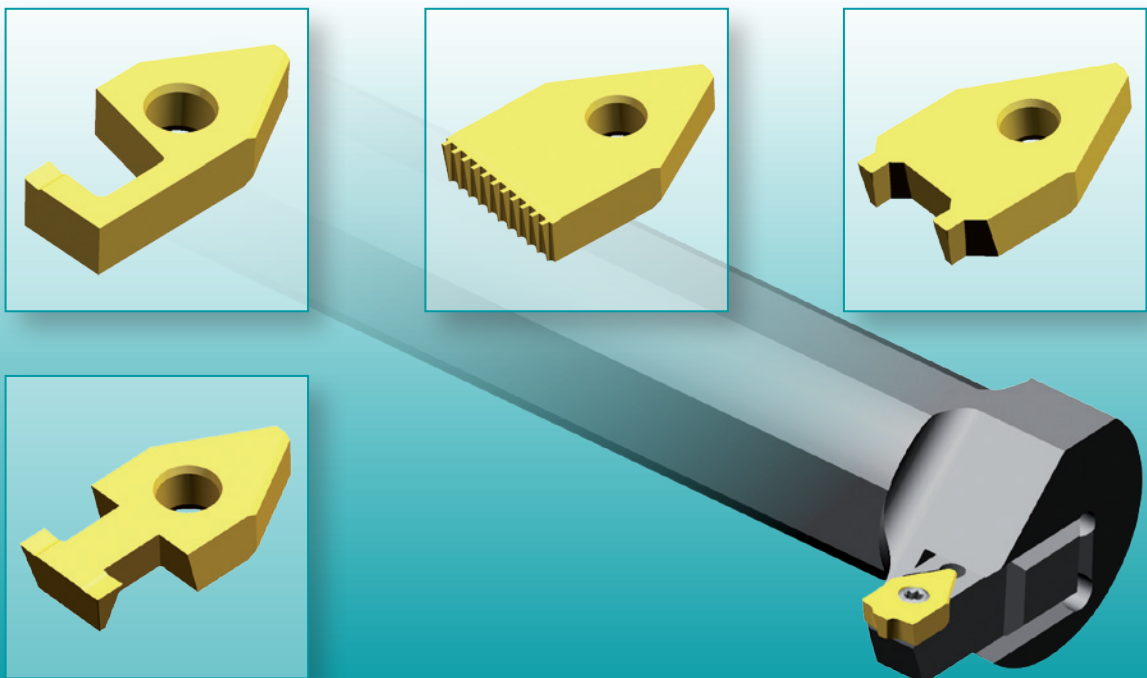


Tailor made insert with 4 edges based on MC4 system

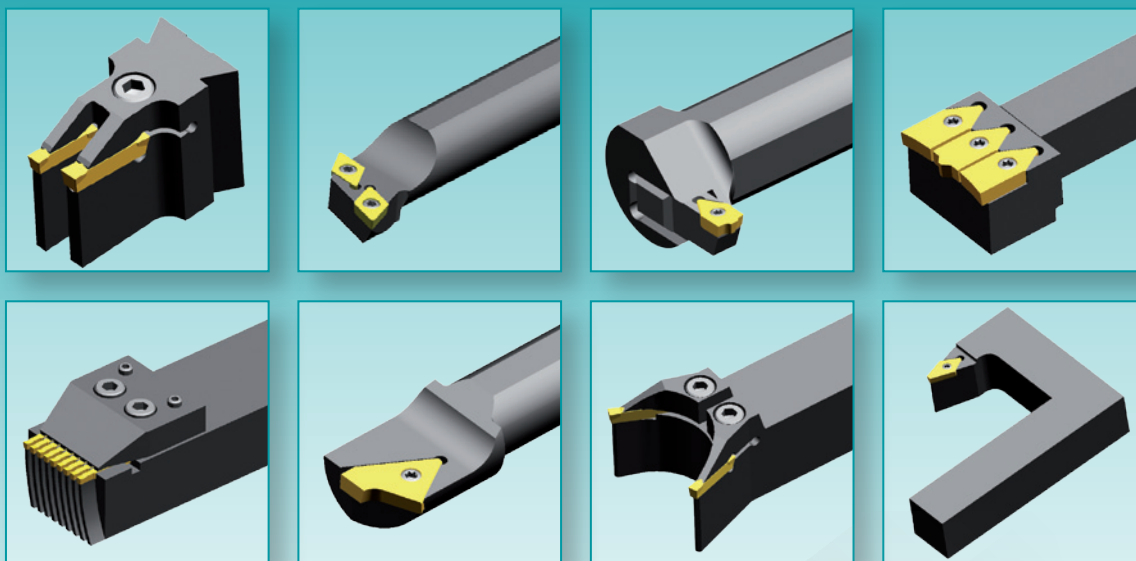


*Individual precision
on each corner*

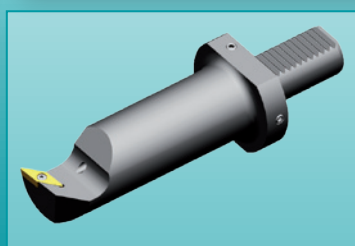
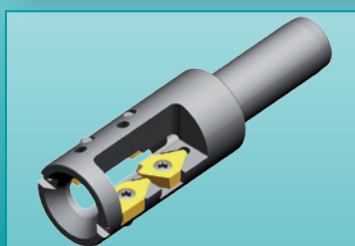
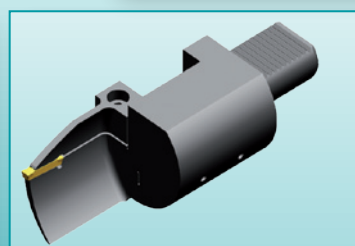
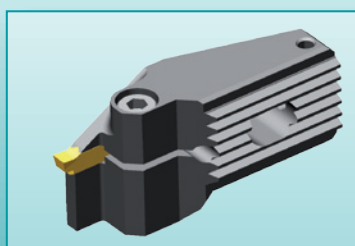
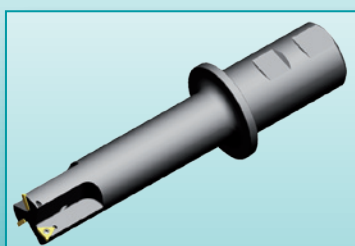
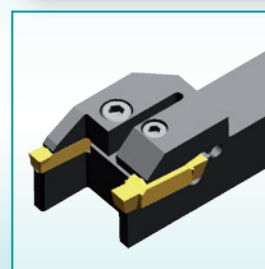
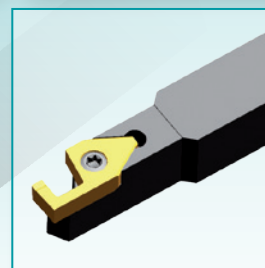
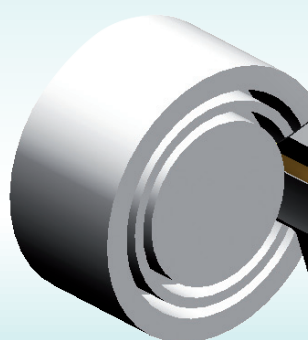
Profile inserts based on F92 system



Special tool holders with inserts



*Sophisticated solutions
for your requirements*



Two examples for cost saving solutions

The cutting and grooving insert MTNZ 4 NANOSPEED completely finishes the shaft; front and rear side of the pinion.



Actual situation:

Expensive production sequence caused by awkward turning operations using left and right tool holders. The customer delegates the problem to the designer.

Process:

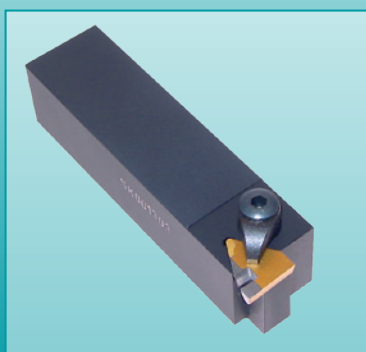
At first he considers the problem.
Some days later, he has found the solution.

Clearance cut using a modified TPGN insert.

Goal: The production time for this piston had to be reduced.

Mission: The task to create a special tool to save time. A tough nut to crack, for the designer. However he solved it.

In a letter of gratitude the customer stated that the special tool reduces component production time by 10 minutes.



**Production time
reduced by 10 min!**

